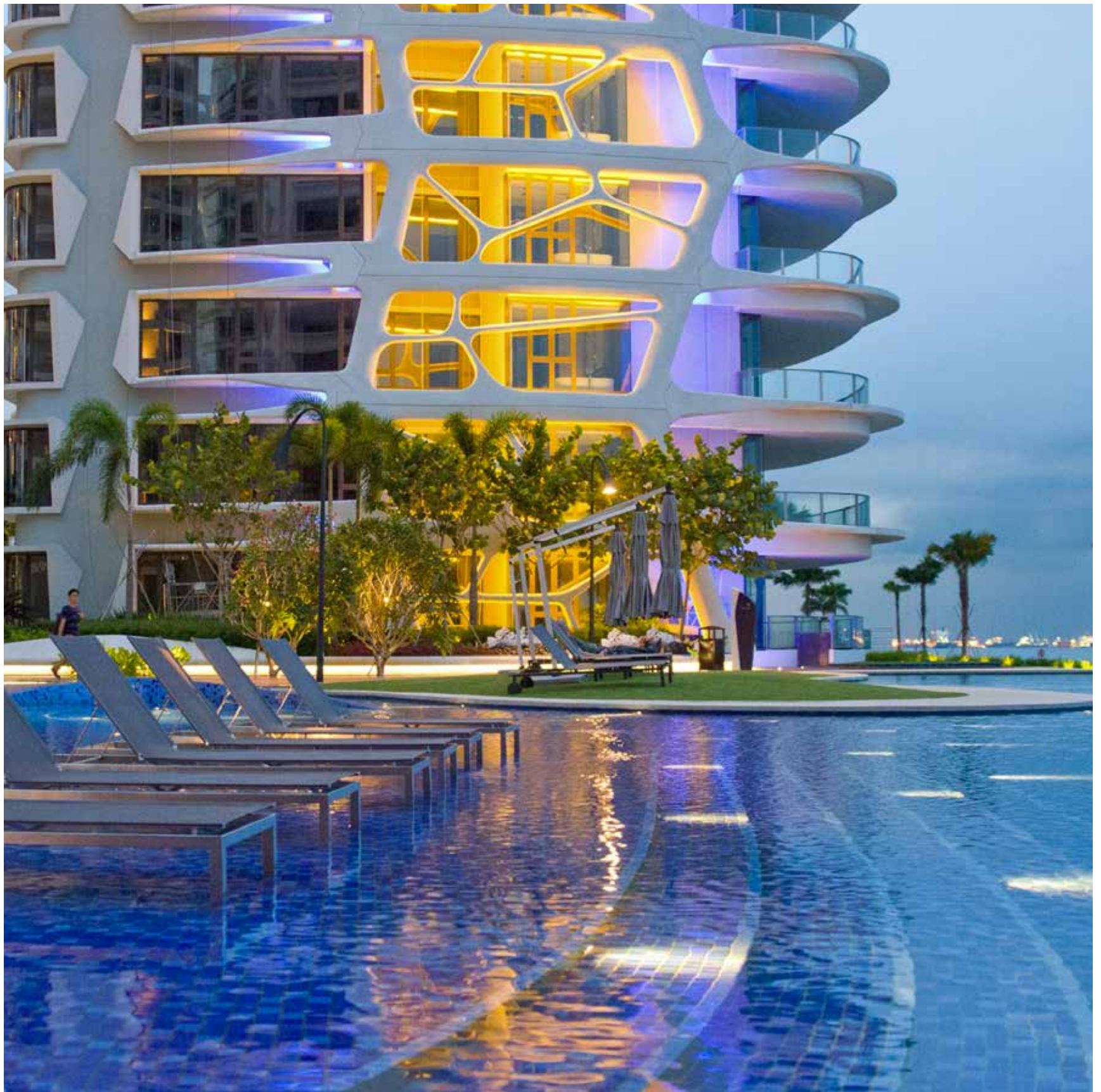


DesignOne

TRANSFORM ARCHITECTURE GLOBALLY



THE WORLD OF DESIGNONE

*"At DesignOne, we believe architecture is more than creating buildings—it's about
shaping lives, fostering communities, and leaving a legacy
that transcends time and borders."*

**“As designers, we create something out of nothing.
The first stroke of a pencil on paper,
the first line of drawing on computer,
is the beginning of a new journey of discovery.”**

Dan Ameresekere



TABLE OF CONTENTS



Cape Royale, Singapore

07 - 08 **Message from the Founder**

How strategic partnerships enable us to leverage expertise, enhance innovation, and drive impactful solutions across diverse projects.

09 - 10 **The Story So Far**

DesignOne’s global journey has been marked by transformative collaborations and groundbreaking projects across continents. From award-winning designs to sustainable innovations, we continue to redefine architectural excellence, shaping the future of design worldwide.

11 - 12 **Celebrating Excellence**

Our innovative and sustainable approach to design has earned us multiple prestigious design awards, recognizing excellence in the field.

13 - 84 **Curated Works**

Projects highlight a blend of creativity, innovation, and sustainability, setting new benchmarks in architecture and design. These projects reflect a commitment to transforming spaces and creating lasting impacts on communities.

DesignOne

TRANSFORM ARCHITECTURE GLOBALLY

MESSAGE FROM THE FOUNDER

At DesignOne, we believe architecture has the power to transform not only spaces but also the lives of those who inhabit them. From our humble beginnings in Colombo to becoming a global boutique design firm, with a presence in Dubai, Riyadh, and Singapore, our journey has been one of innovation, collaboration, and unwavering commitment to excellence.

DesignOne was founded with a singular vision: to craft spaces that inspire, resonate, and endure. Our work blends artistic ingenuity with sustainable practices, creating designs that respond not only to their physical and cultural contexts but also to the aspirations of those they serve. Whether it's a bespoke luxury home, a multi-residential tower, or a large-scale mixed-use development, every project we undertake is a story waiting to be told—a story of harmony between form, function, and emotion.

Our success is built on the strength of our people and partnerships. Collaborating with visionary leaders, world-class consultants, and a dedicated in-house team, we consistently push the boundaries of what's possible in architecture. From award-winning projects such as Cape Royale in Sentosa Cove to our ambitious involvement in Saudi Arabia's urban transformation, DesignOne is shaping the future of cities and communities.

As we continue to grow, our mission remains clear: to create iconic designs that leave a lasting impact. We are driven by curiosity, fueled by creativity, and inspired by the belief that great architecture can transcend time.

Thank you for sharing this journey with us. We look forward to building a better, more beautiful world—one project at a time.

Warm regards,
Dan Ameresekere



ARCHT. DAN AMERESEKERE
GLOBAL CHAIRMAN

A black and white photograph of a man sitting at a dark wooden desk in a modern office. He is wearing a light-colored shirt and dark trousers, and is smiling towards the camera. To his right is a large, white, geometric shelving unit with various items on it, including books, a small figurine, and a clock. The office has a large window in the background, and the floor is covered with a patterned carpet.

THE STORY SO FAR

Pioneering Architectural Excellence Genesis of Innovation

Dhananjana Ameresekere, affectionately known as Dan, began his creative journey amidst the vibrant landscape of Colombo, Sri Lanka. From crafting toy cars to experimenting with robotics, his childhood passion for innovation set the stage for a future dedicated to pushing the boundaries of architectural design. Simultaneously, Dan's love for drawing and painting became his artistic outlet, allowing him to reimagine the world and bring imaginative creations to life. Excelling in academics, he consistently claimed the class prize at St. Thomas College Mt. Lavinia before pursuing further education at Wycherley International and Colombo International Schools, completing his London Ordinary and Advanced Levels.

Architecture was not initially part of Dan's plans until his mother, Lilamani, suggested it at the age of 15. This revelation resonated deeply, offering him a platform to merge his artistic talent with scientific curiosity. This unique fusion became the guiding principle for DesignOne, inspiring a culture of out-of-the-box thinking, innovation, and experimentation—values that remain core to the firm's ethos.

Formative Years at Yale: A Tapestry of Knowledge

Accepted into Yale University for a Bachelor of Arts degree, Dan's early years in the United States were transformative. Beyond architecture, he pursued a double major in Economics, encouraged by his father Nihal's belief in grounding architects with practical knowledge. This blend of disciplines enabled Dan to propose innovative designs while bridging the realms of architecture and economics.

Yale's liberal arts environment provided a springboard for Dan's intellectual exploration. Courses ranging from Robotics to Mandarin Chinese, Sculpture to Theology, expanded his horizons. His thesis, *"Using Fractals and Symmetry Theory to Design Sacred Space,"* supervised by Kent Bloomer and Nicholas Wolterstorff, epitomized the convergence of architecture and theology, themes that remain integral to his work.

Mentored Under Libeskind at Penn: Forging a Design Language

Dan continued his education at the University of Pennsylvania, earning a Master's in Architecture as the youngest in his class at 21. A stellar academic journey ensued, marked by six awards, including the Paul Philippe Cret Medal. His thesis, "The Church of the Unashamed," mentored by the iconic Daniel Libeskind, laid the foundation for Dan's distinct design language. Working with Libeskind shaped Dan's design aesthetic into one that was both critical and original, rooted in exploring the origins of ideas rather than precedent studies. This approach formed the bedrock of his architectural philosophy, with each project narrating a story inspired by its context, client, or program, brought to life through space and language.

Philadelphia Sojourn: An Architectural Blossoming

As a Staff Architect with MGA Partners in Philadelphia, Dan honed his design skills, collaborating closely



Dan A. and Dan Kelley

with Principal Architect Dan Kelley. Together, they emphasized public space and civic responsibility, with projects like the Bryn

Mawr College Masterplan and the Philadelphia Center City Strategic Plan earning national recognition for their seamless integration of modernity and tradition.

Singapore and Beyond: Global Recognition Beckons

In 2004, Dan joined Architects61 Pte Ltd in Singapore, a move that redefined his career. As an Associate, he led award-winning projects, including the iconic 8 Tower Cape Royale Project in Sentosa Island. His innovative designs transformed this development into one of Singapore's most coveted residential addresses.

Return to Sri Lanka: DesignOne's Inception

Driven by a desire to contribute to his homeland, Dan returned to Sri Lanka in 2011, taking on the role of Chief Consultant Architect for the Kingsbury Hotel refurbishment, for which he received a Presidential Award. Later that year, Dan founded **DesignOne** Limited, where he continues to serve as Chairman.

Innovative Customized Design: A Signature Approach

DesignOne has become Colombo's premier boutique architectural design firm under Dan's leadership. Each project is a meticulously crafted narrative inspired by the site, program, and client, often drawing inspiration from nature to create seamless, organic forms. This holistic approach ensures each project resonates deeply with its context and purpose.



Dr. Waleed and Dan in Hail KSA

Global Expansion Through Visionary Partnerships

DesignOne has grown into a truly global studio through a series of transformative collaborations.

In Dubai, DesignOne has partnered with Sikander Haameed Khan, whose expansive business empire spans trading, construction, healthcare, media, and technology. His wealth of influence and resources—ranging

from high-value real estate to one of the region's most exclusive private museum collections—cements him as a powerful ally in bringing DesignOne's architectural vision to life in the UAE and beyond.

In Saudi Arabia, a strategic joint venture with Dr. Waleed Mohamed Kasab Al Hemaidei and WMAH positions the practice as a key player in the Kingdom's architectural evolution. Together, they blend modern design, sustainability, and heritage preservation to align with the ambitious goals of Vision 2030.

In Venice, a joint venture with Gianluigi Filippi of Hub Italian Design provides DesignOne with a direct gateway to Italy's renowned design ecosystem. With privileged access to Northern Italian factories, the partnership anchors a new channel for integrating authentic Italian-made excellence into global projects.

Expanding Horizons: A Global Design Vision

DesignOne's portfolio spans bespoke designer homes, entire cities, transportation hubs, luxury resorts, and high-rise mixed developments. With over 25 multi-residential and commercial towers designed across Colombo, Singapore, Dubai, and Saudi Arabia, the firm combines artistic innovation, sustainability, and visionary leadership to redefine architectural excellence globally.

With established presences now in Colombo, Dubai, Riyadh, and Venice, DesignOne is poised to shape iconic structures worldwide—creating spaces that not only inspire but leave an indelible mark on communities and urban landscapes.



With HRH Prince Mishal Bin Mohammed Bin Saud



GLOBAL VISIONARIES



SIKANDER HAMEED KHAN
UNITED ARAB EMIRATES PARTNER
DUABI

A visionary entrepreneur with over six decades of business leadership, Sikander Hameed Khan has built a diverse empire spanning trading, construction, media, healthcare, and technology across Dubai and Saudi Arabia. His influence is amplified by his stewardship of one of the Middle East's most exclusive private museums, housing rare artifacts, scriptures, and collectibles of immense cultural and financial value. Partnering with DesignOne, Sikander brings not only vast resources but also a wealth of global connections, anchoring the firm's expansion into the UAE and beyond.



PROF. CHITRA WEDDIKARA
QUANTITY SURVEYING HEAD
QATAR

Prof. Chitra Weddikara brings over 40 years of expertise in architecture, quantity surveying, project management, and construction law. A Past President of both the Institute of Quantity Surveyors and the Institute of Architects Sri Lanka, Fellow of multiple international institutions, and Emeritus Professor at the University of Moratuwa, she combines deep technical knowledge with strategic insight. Her guidance ensures every project is delivered with precision, efficiency, and world-class standards, resulting in developments that are sustainable, technically robust, and expertly managed.



DR. WALEED AL HEMAIDI
SAUDI ARABIA PARTNER
RIYADH

A distinguished urban planner and government advisor, Dr. Waleed has shaped Saudi Arabia's architectural and urban landscape through decades of leadership. With a PhD from the Bartlett School of Architecture, UCL, he has advised the Royal Commission for Riyadh City and the Ministry of Municipal and Rural Affairs and Housing, while serving on influential boards such as Wadi PIF and the Asir Development Authority. His vast network across government and academia positions him as a key figure driving national strategies in planning, sustainability, and cultural preservation.



ENG. KEERTHI RATNAYAKE
ENGINEERING & SUSTAINABILITY HEAD
COLOMBO

As DesignOne's head of engineering and sustainability, Keerthi brings decades of expertise to transforming visionary concepts into high-performance, environmentally responsible projects. A Chartered Engineer, LEED® Accredited Professional, BREEAM® Licensed Assessor, and GBCSL Accredited Professional, he guides every stage of design and delivery, ensuring luxury residences, urban developments, and master-plans achieve world-class standards. His leadership shapes projects that are not only architecturally striking but also sustainable, resilient, and in harmony with their environment.



GIANLUIGI FILIPPI
ITALY PARTNER
VENICE

Gianluigi Filippi embodies the timeless elegance of Italian culture and design. Rooted in Venice, a city celebrated as the cradle of art, architecture, and craftsmanship, he brings a deep cultural sensibility to DesignOne's global vision. His work bridges heritage and modernity, infusing projects with an appreciation for history while embracing forward-looking innovation. As a custodian of Venice's design legacy and a visionary collaborator, Gianluigi strengthens DesignOne's presence in Europe, ensuring that every creation resonates with artistry, refinement, and cultural depth.

An aerial photograph of the Avinya Academy in Bandaragama, Sri Lanka. The image shows a large, white, multi-sectioned tent or canopy structure situated in a lush, green landscape. To the right of the tent is a dark, calm pond. The area is surrounded by dense tropical vegetation, including numerous palm trees. A dirt road or path runs through the scene, and several small buildings or structures are visible in the background. The overall scene conveys a sense of a well-maintained outdoor event space.

CELEBRATING EXCELLENCE

Avinya Academy, Bandaragama, Sri Lanka

DesignOne has consistently been recognized on the global stage for its innovative and sustainable architectural designs, earning accolades across diverse categories and regions. From prestigious international awards to competitive wins resulting in commissions, the firm's work reflects a commitment to excellence and transformative design. Here is a selection of the awards and honors received:

World Architecture Award Shortlist 2024
Avinya Academy, Bandaragama, Sri Lanka

Architecture MasterPrize 2024
Honourable Mention, WS02 Inc. Offices, Colombo, Sri Lanka

Architecture MasterPrize 2024
Honourable Mention, Ameresekere Residence, Nawala, Sri Lanka

Competition Winner 2024
Orient & Janashakthi Insurance Offices, Colombo, Sri Lanka

Competition Winner 2024
JXG Offices, Colombo, Sri Lanka

Architecture MasterPrize 2023
Honourable Mention, Avinya Academy, Bandaragama, Sri Lanka

Competition Winner 2023
WS02 Inc. Offices, Colombo, Colombo, Sri Lanka

Competition Winner 2023
Avinya Academy, Bandaragama, Sri Lanka

Best Luxury Architect Studio 2022
Sri Lanka Studio, Luxury Lifestyle Awards, New York City, USA

Best Luxury Architect Studio 2021
Sri Lanka Studio, Luxury Lifestyle Awards, New York City, USA

Competition Winner 2018
Hemas Hotels Renovations, Various Cities, Sri Lanka

Presidential Award for Design Excellence 2013
The Kingsbury Hotel, Sri Lanka



Masai Mara, Kenya



CURATED WORKS

*Each project has a story to tell.
Often Inspired by the location,
the client or the program.
This story has to be told through
space and architectural language.
It finds its led from the first sketch,
all the way to its final details.*



A BIOMIMETIC, SELF-SUSTAINING SMART CITY BUILT USING ADAPTIVE MODULES INSPIRED BY CORAL REEF SYSTEMS TO ADDRESS RAPID URBANISATION, CLIMATE RESILIENCE, AND RESOURCE SCARCITY BY CREATING CITIES THAT GROW IN A SUSTAINABLE AND RESPONSIVE MANNER.

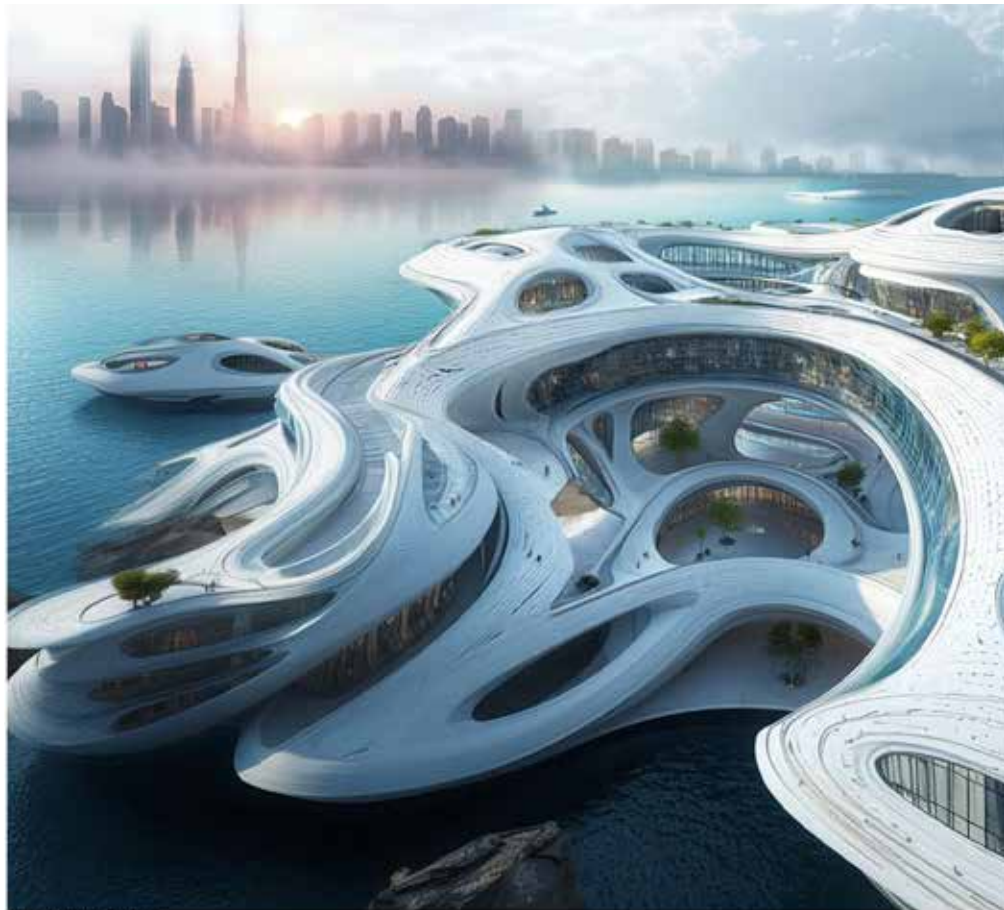
CITY2100

FUTURE CITY IN THE SEA

Dubai, United Arab Emirates

Reimagining Urban Futures, Designing for Generations

The City2100 Project is a bold initiative led by DesignOne to envision the Cities of the Future. With a focus on sustainability, innovation, and human-centered design, the project brings together architects, technologists, and thought leaders from around the world to reimagine urban living. Set against the backdrop of artificial islands off Dubai and supported by AI Maktoum Neo Technologies, City2100 explores cutting-edge ideas in smart cities, eco-friendly design, and AI integration, aiming to create resilient, inclusive, and forward-thinking urban environments.



AERIAL PERSPECTIVE



THE LUNG - INTERIOR



ATRIUM /ELEVATED MCNOLITH - INTERIOR



ESTABLISHED POLYP, GROUND CONNECTION - AERIAL

SYSTEMA TERRA.FORMA



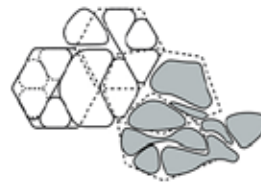
CLUSTER LOOP SYSTEMS

A self sustaining city powered by blockchain and tokenization
- plugged into Dubai



MODULAR GROWTH

A city that grows in smart modules
- scalable, and responsive to environment and requirements.



ADAPTIVE MODULES

Flexible modules adapt to design constraints - generated through software to fit each island context.



Envisioning sustainable, inclusive, and innovative cities that harmonize technology, nature, and humanity for a better tomorrow.

CAPE ROYALE

LIVING CORAL: ARCHITECTURE & LANDSCAPE

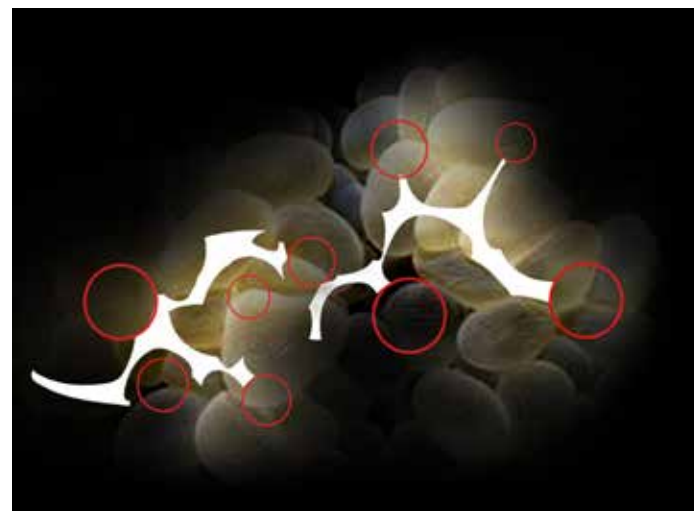
Sentosa Cove, Singapore

Cape Royale, at Sentosa Cove, was born out of inspiration drawn from the mysterious and enchanting marine world, specifically bubble corals and tree corals that are not just beautiful to look at but are also protective of their community. Each tower block is an organic cluster with soft edges and undulating surfaces, whose three-dimensional quality changes with the vantage point, light quality and time of day. Extensive water features connect the architecture with the sea, while the gardens and communal facilities are thoughtfully arranged in relation to scenic vistas making Cape Royale an ideal place for residential living with an aesthetic touch. Cape Royale is a culminating piece in Singapore's exclusive waterfront. By integrating site, landscape, and architecture, Cape Royale is a development specific to its location, providing Sentosa Cove with an identifiable landmark and its residents with a unique home and sanctuary.









Bubble corals inspired a distinct style of architecture and landscape that reflects the undersea world







THE COAST

SERPENTINE DESIGN, SERENE LIVING

Sentosa Cove, Singapore

The Coast is an exclusive 249-unit luxury condominium at Sentosa Cove, where architecture, landscape, and the sea converge. Its undulating, wave-inspired form offers panoramic views of the South China Sea and Sentosa's waterways, while sculptural water features and reflecting pools enhance the sense of serenity. Thoughtfully integrated into the landscape, the design celebrates the natural rhythm of the coast, creating a refined, context-sensitive environment that harmonizes luxury living with the beauty of its maritime setting.



MARINA COLLECTION

MEDITERRANEAN STYLE RESORT LIVING

Sentosa Cove, Singapore

Perched on the edge of pristine cruising grounds, the Marina Collection offers 124 exclusive, spacious and utterly luxurious units and 40 private berths on a beautiful waterfront settings. The paragon of luxurious living, the development is surrounded by the luscious greens of the Tanjong Course of Sentosa Golf Club and One Degree 15 Marina Yacht Club. Even amidst all of this luxury, the city center is a short distance away, making it easy to live in paradise and work in the busy city. Inspired by Mediterranean seaside living, the Marina Collection brings you the unique blend of tranquility and convenience in modern city living.







Inspired by the architecture of ships, the design is in dialogue with the changing sun, as it moves across the sky - the essence of living with nature, close to the sea.



SEASCAPE

INSPIRED BY VESSELS, ANCHORED IN LUXURY

Seascape, draws its inspiration from a hulls of majestic vessels floating on the ocean and is aptly designed to complement waterfront living. The bold exterior design incorporates nautical elements and the most notable feature of this structure is the large balconies exuding the aura of private viewing decks hovering over water.



Sentosa's Majestic Metamorphosis:
From Island of Death to the World's Most Desirable Address



BIRTH OF SENTOSA COVE

RESPLENDENT TRANSFORMATION

The metamorphosis of Sentosa Island, from its historical moniker “Pulau Blakang Mati” meaning “Island of Death from Behind” in Malay, into the epitome of opulence and luxury, stands as a testament to visionary architectural development. Before its commercial evolution, Sentosa was a place with a somber past, but with strategic planning and innovative design, it has undergone a remarkable transformation. Now recognized as the most prestigious residential address globally, Sentosa Cove emerges as the jewel in this crown of architectural brilliance.

At the heart of this evolution lies the residential development of Sentosa Cove, a project that redefined luxury living. Notable contributors to this opulent enclave include iconic projects such as Cape Royale, The Coast, Marina Collection, and Seascape. Cape Royale, with its architectural grandeur, became a cornerstone in shaping the aesthetic landscape of Sentosa Cove. The Coast, an embodiment of coastal sophistication, seamlessly integrated into the natural surroundings, creating a harmonious blend of modern living and nature. The Marina Collection, an ode to nautical elegance, further elevated the enclave's allure with its exclusive waterfront residences. Seascape, a project that encapsulates the essence of seaside living, added a touch of serenity to the vibrant tapestry of Sentosa Cove.

Together, these architectural marvels have not only transformed the physical landscape of Sentosa Island but have also elevated its status to a world-renowned residential haven. The success of Sentosa Cove stands as a testament to the power of visionary design and strategic urban planning in crafting spaces that transcend their historical narratives, offering a lifestyle that epitomizes luxury and sophistication.





SIKANDER MUSEUM

LANDMARK OF SACRED LEGACY

Dubai

As one of DesignOne's flagship cultural endeavors, Sikander's Museum is conceived as a sanctuary where eternity and legacy find form. Born from the lifelong passion of Sikander Hameed Khan, the museum safeguards over 4,000 handwritten Qurans, alongside rare Bibles, Torahs, and sacred manuscripts, creating one of the world's most profound interfaith scriptural collections. Around these sacred texts, a vast assemblage of artifacts, paintings, and timeless objects speaks to the endurance of human creativity across civilizations. DesignOne's vision is to shape not merely a museum, but an eternal landmark—an architectural symphony that honors the sacred, preserves legacy for generations to come, and positions Dubai as a luminous beacon of dialogue, knowledge, and wonder for the world.



INTERGRATED TOURISM COMPUND

INSPIRED BY TRADITION, DESIGNED FOR TOMORROW

Riyadh, Kingdom of Saudi Arabia

A visionary twin-tower development, ITC is strategically located near the airport, designed to embody both tradition and modernity. Inspired by the Arabic letter Hamzatul Wasl, the project symbolizes connection and continuity, weaving cultural heritage into a contemporary architectural statement. The towers house a world-class hotel and serviced apartments, complemented by a vibrant podium of retail and office spaces that foster business, leisure, and lifestyle synergy. At its heart lies a serene green oasis garden, a living sanctuary that brings nature into the urban fabric, offering a place for reflection, gathering, and respite. More than a destination, this resort redefines Riyadh's hospitality and commercial landscape, merging iconic design with sustainable luxury to create a new landmark for the Kingdom.







LOTUS MALL

FLOATING ELEGANCE ON COLOMBO'S WATERFRONT

Colombo, Sri Lanka

Inspired by a Lotus Leaf floating over water gracefully, the curvilinear form of each level of the Lotus Mall, appears to hover over the waterfront. A membrane structure forming the roof and part of the wall wraps around the building along Colombo's busy D.R. Wijewardena Road, shielding it from the busy commercial street, while it blossoms along the water to celebrate waterfront activities. Restaurants located along the waterfront edge spill out into the garden decks capturing vistas of the Colombo skyline. The linear atrium space along the middle of the building brings in natural light and cross ventilation, forming a unique public gathering space to the Lotus Mall experience.



JXG HEADOFFICE

A BEACON OF INNOVATION AND COLLABORATION

The new Janashakthi Group (JXG) Headoffice at Mireka Tower redefines traditional workspaces by fostering collaboration, creativity, and innovation. Inspired by a thread of light symbolizing direction, hope, and life, the design transforms the floor plate into a dynamic and energizing environment.





Project Location

Colombo, Sri Lanka

A Workspace Reimagined

Key features include an indoor mini-golf course, a Lego brainstorming wall, a mini-amphitheater, a deluxe café, a Wall of Celebration, a Magic Boardroom, and interconnected solid wood worktables—all seamlessly tied together by innovative lighting design.

This project celebrates a collective effort: from the visionary leadership of the JXG team, led by Ramesh Schaffter, to the creativity of DesignOne Studio architects, skilled contractors, lighting designers, and landscape specialists. Together, they brought this transformative office space to life, creating a vibrant community that embodies energy, collaboration, and excellence.

WS02 OFFICE TOWER

Baudaloka Mawatha, Colombo, Sri Lanka



A TECH TREEHOUSE FOR INNOVATION AND IMAGINATION

Reimagining the workplace post-pandemic, the WSO2 Office Tower is designed to inspire creativity, interaction, and reflection, blending innovation with tradition to celebrate WSO2's unique culture.



Technology is not just about innovation; it's about creating spaces where ideas can grow, connections can thrive, and the future can be imagined.



Where Innovation Meets Tradition

A Workspace Designed to Inspire and Connect



Bridging Cultures, Connecting Futures



MEI LIN TOWER

CELEBRATING TRADE ROUTES

ShenZhen, China

Bridging Commerce, Culture and Modernity

The architectural language of this twin tower project was inspired by Trade routes, through which commercial activity was carried to satisfy trading needs within cities. These Trading Routes had in fact existed from Ancient Times, with China taking lead as seen in the expeditions of General Zheng. ShenZhen has emerged as a pivotal node in these Trade routes and its role in commerce is celebrated through design.

Mei Lin Towers is a stylized twin 40 floor structure suitable for work, rest, and shopping. Situated on the trading route, Mei Lin Towers celebrates ShenZhen as a jewel on this land bridge. With the belt and road initiative bringing economic prosperity to all parties involved, Mei Lin Towers can be seen as a symbol of peace between participating countries.



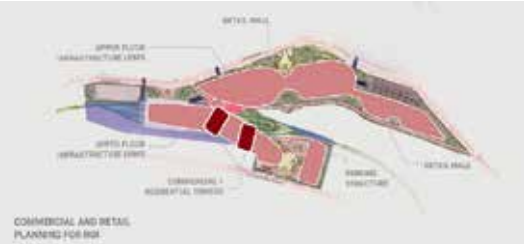
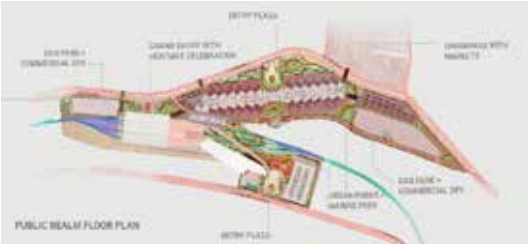


COLOMBO TRANSPORT HUB

BEYOND CONNECTIVITY - A CATALYST FOR URBAN EVOLUTION

Colombo, Sri Lanka

The Colombo Transport Hub is a transformative project designed to integrate multiple transportation systems, including bus, train, monorail, and pedestrian networks, into a single efficient centre. Located in the heart of Pettah, Colombo’s bustling trade and infrastructure hub, it will provide seamless connectivity for passengers, improving traffic flow and enhancing mobility across the city. The development will feature twin commercial towers above the transport terminal, with facilities such as an elevated monorail, rail station, ferry terminal, and ample parking. The 45-floor towers will offer prime office and retail spaces, complete with helicopter access to the rooftop. This project aims to create a dynamic, interconnected environment that supports business growth, fosters convenience, and elevates Colombo’s urban landscape.





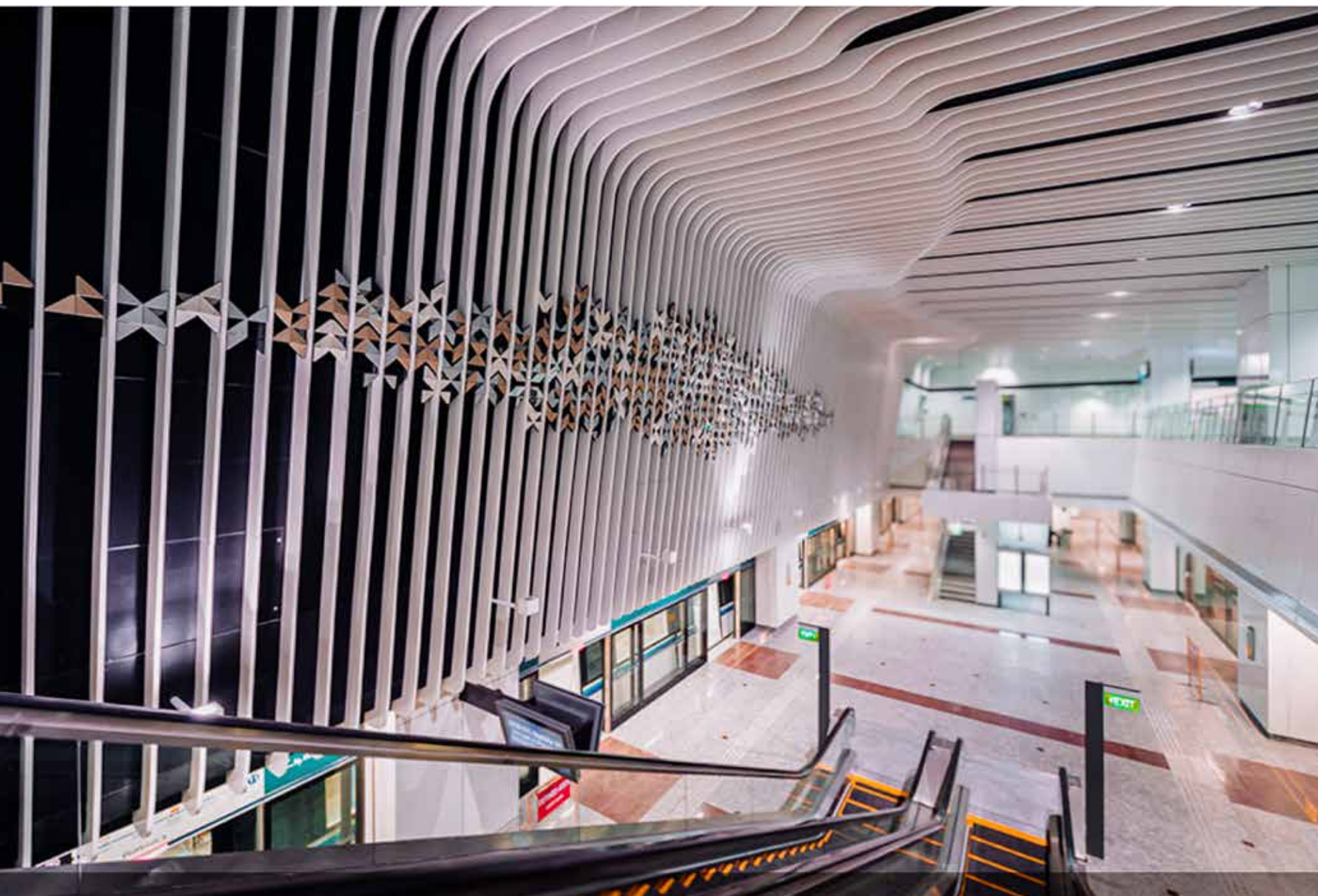
CHANGI AIRPORT TERMINAL 1

EXTENDING THE WORLD'S BEST AIRPORT

Singapore

The renovation and extension of Terminal 1 at Changi Airport further solidifies its status as the World's Best Airport by Skytrax. The iconic 'Lantern,' glowing at night, enhances visibility and provides a striking welcome to visitors. Inside, kinetic 'Rain' sculptures add drama to the departure hall, while two skylights filter daylight into the space. An airside extension offers an exciting shopping and dining experience, while the refurbished baggage claim area presents a 'tropical' arrival atmosphere. A lush Central Garden with runway views adds a serene touch to the terminal's dramatic transformation.





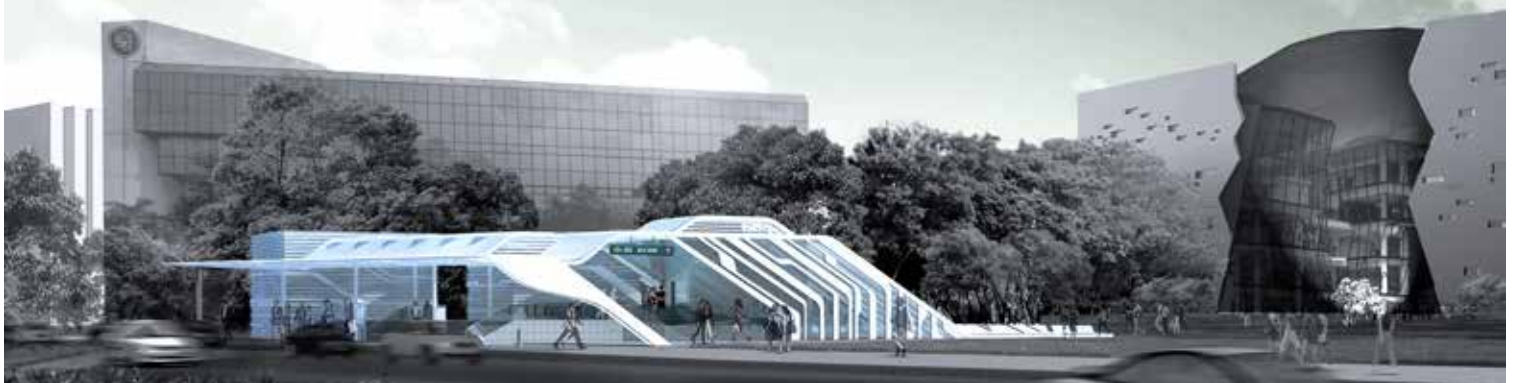
LITTLE INDIA STATION

WEAVING CULTURE INTO MOTION

Singapore

For the Little India Train Station, the design theme is based on the Sari, a timeless cultural icon, to become a fashion statement and an inspiration. The flowing form becomes the entry piece to the station and the language for its interior. The form is organic, fluid and sinuous, giving a fresh identity to Little India Station, whilst still firmly rooting it in its context among the Indian heritage section of Singapore. The large double-height space at the platform level heightens the sense of arrival, while at the same time integrates the platform and concourse level, giving a sense of security and comfort by allowing visual connections between the different levels.





ROCHOR STATION

TECH INSPIRED TRANSIT DESIGN

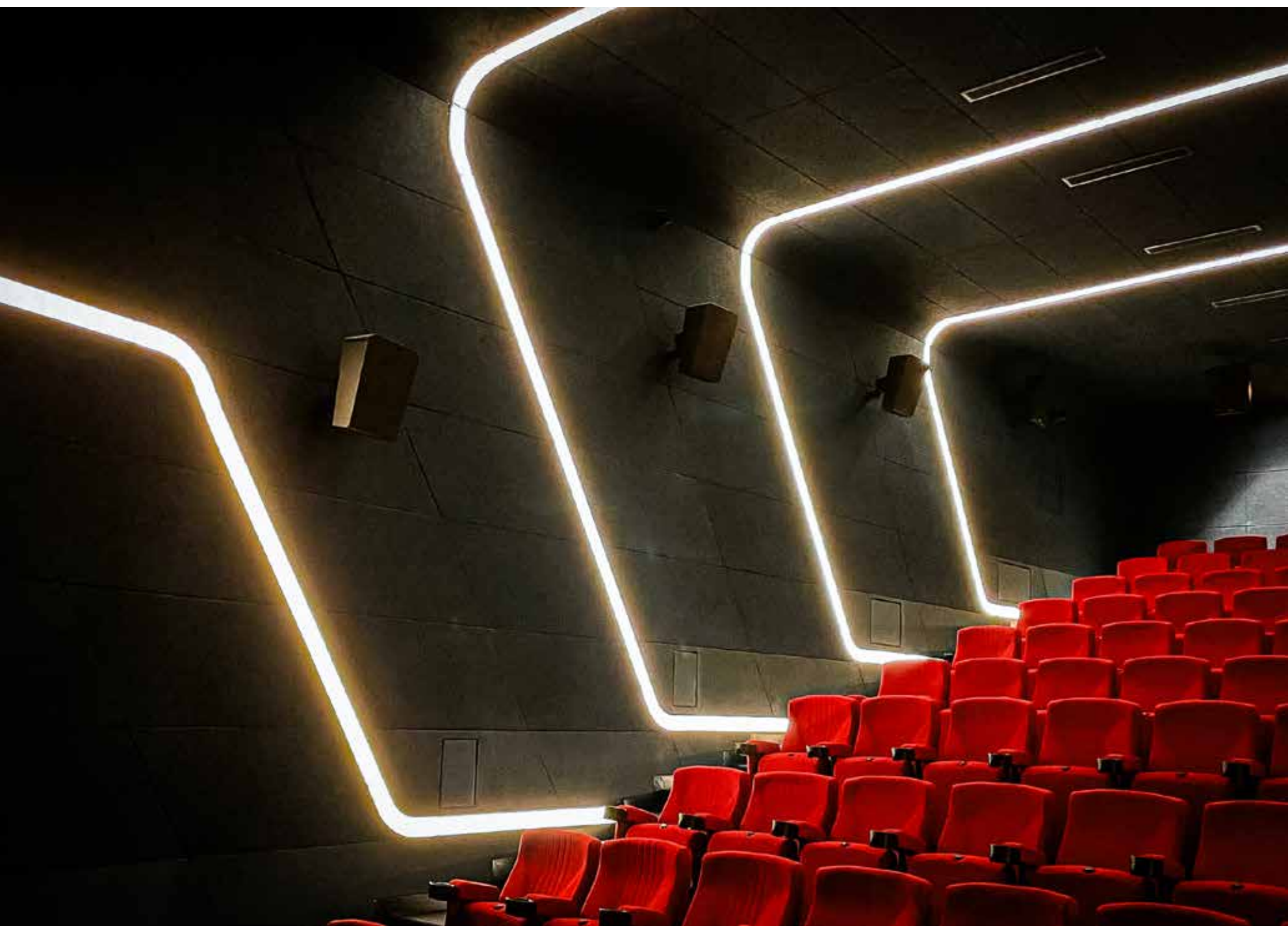
Singapore

The design of the Rochor Mass Rapid Transit Station draws inspiration from circuit board patterns, symbolizing dynamism and movement, reflecting its context as part of Singapore's IT hub. The integrated entrances allow seamless connectivity between various transportation systems—bus, taxi, bicycle, and train—promoting green transport alternatives.



Illuminating the future of transit: A circuit-inspired design where dynamic lighting and fluid patterns guide the way, seamlessly connecting movement and innovation.





KANDY CITY CENTER

HERITAGE MEETS MODERN ELEGANCE

Kandy, Sri Lanka

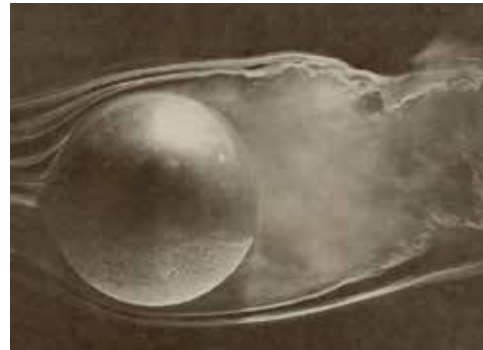
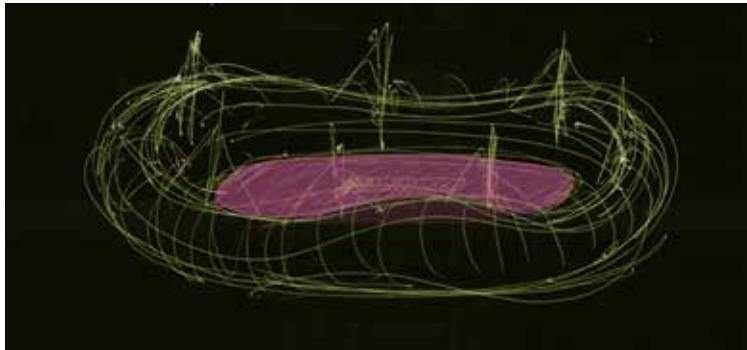
The Kandy City Center (KCC) Extension seamlessly weaves heritage and modernity, celebrating the cultural essence of Kandy while embracing contemporary design. With a state-of-the-art Dolby Atmos multiplex, a stunning banqueting hall overlooking the iconic Kandy Lake, and a vibrant shopping and dining hub, the development offers a refined lifestyle experience. Enhanced by luxury residential units, KCC redefines the cityscape, uniting tradition with modern sophistication. destination for lifestyle, culture, and entertainment.



COLOMBO SPORTS CITY

HIGH-PERFORMANCE SPORTS HUB

Colombo Sports City, envisioned by a group of former national cricketers, is a groundbreaking development that aims to be a world-class hub for sports, entertainment, and lifestyle. Combining state-of-the-art infrastructure for over a dozen sports with cutting-edge leisure, wellness, and entertainment facilities, it stands as a pioneer in Sri Lanka. The design, inspired by the aerodynamic forms of a ball moving through the air, captures the fluidity and precision of sports, reflecting the dynamic interplay of movement. This innovative architecture fosters an environment that promotes athletic excellence and community engagement. With European technical collaboration, this high-performance centre sets new standards in training and sports infrastructure.







MED TECH CITY

PIONEERING THE FUTURE OF HEALTH

Dhahran, Kingdom of Saudi Arabia

Located in the heart of the Al Khobar neighbourhood, Med Tech City in Dhahran is a visionary hub where cutting-edge technology and compassionate care converge to transform the healthcare landscape. This dynamic medical tech city brings together top minds from across the globe, fostering innovation, collaboration, and groundbreaking advancements in medical research and healthcare solutions. Equipped with state-of-the-art facilities, research laboratories, and a thriving ecosystem of healthcare startups, Dhahran is setting new standards in medical excellence and lifestyle enhancement. Join us in shaping the future of healthcare, where tomorrow's breakthroughs become today's reality.

A. MEDICAL ZONE

General Hospital - 200 Bed
Women & Children Hospital - 100 Bed
Rehabilitation (LTPAC) Diabetes Senior Children - 200 Bed
Rehabilitation (Mental) - 100 Bed
Outpatient Clinics - Clinics, Outpatient Surgery, One Day Surgery
Emergency Center - HEMS Helicopter Emergency Medical Service
Nursing Academy
MOB Medical Office Building

B. HOSPITALITY ZONE

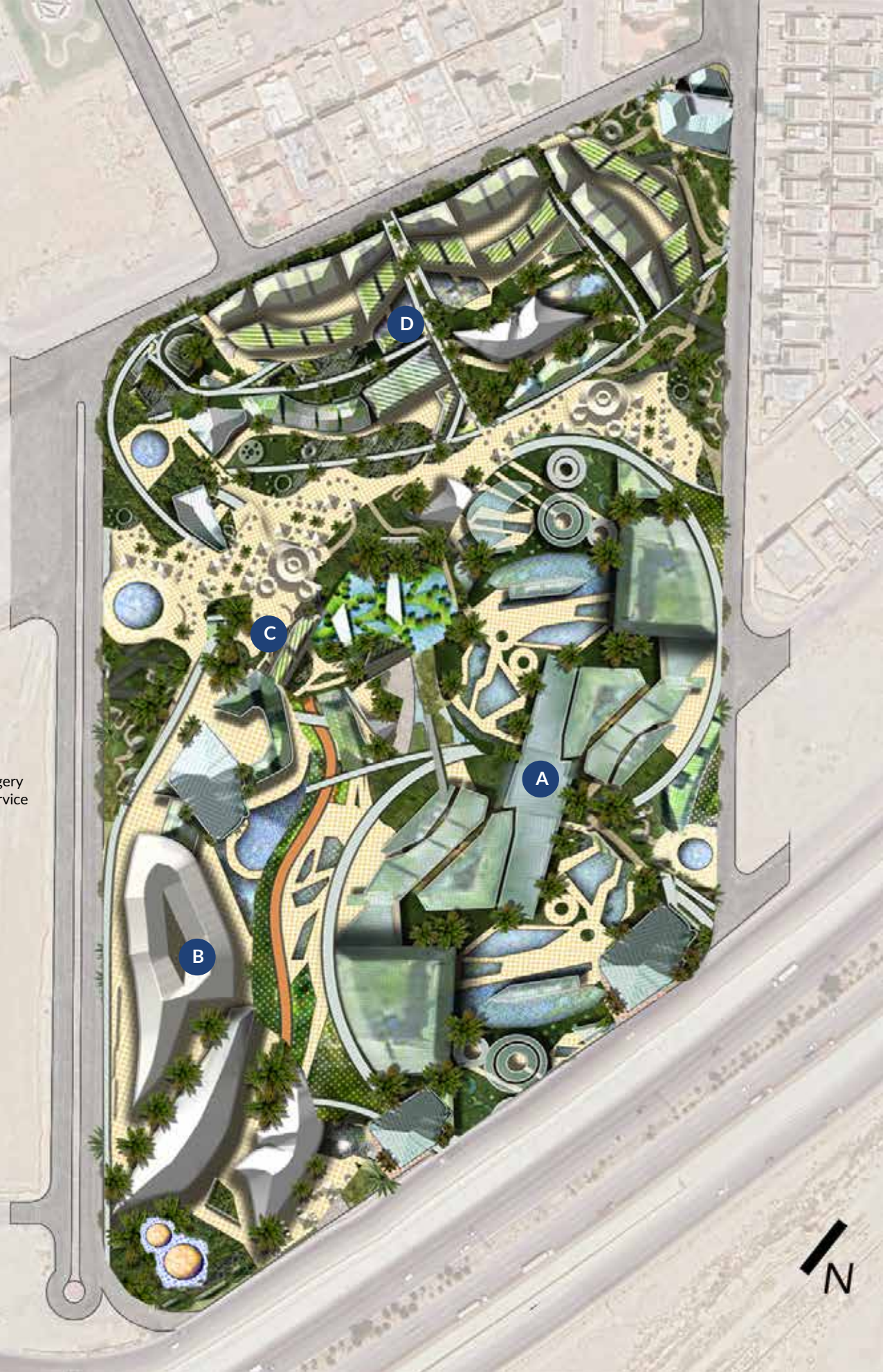
Rehabilitation Hotel (Sports Certified FIFA) - 105 Keys
Luxury Hotel - 200 Keys + 94 Serviced Apartments
Lifestyle Spa & Gym
Business & Convention Center, Offices, ServeCorp

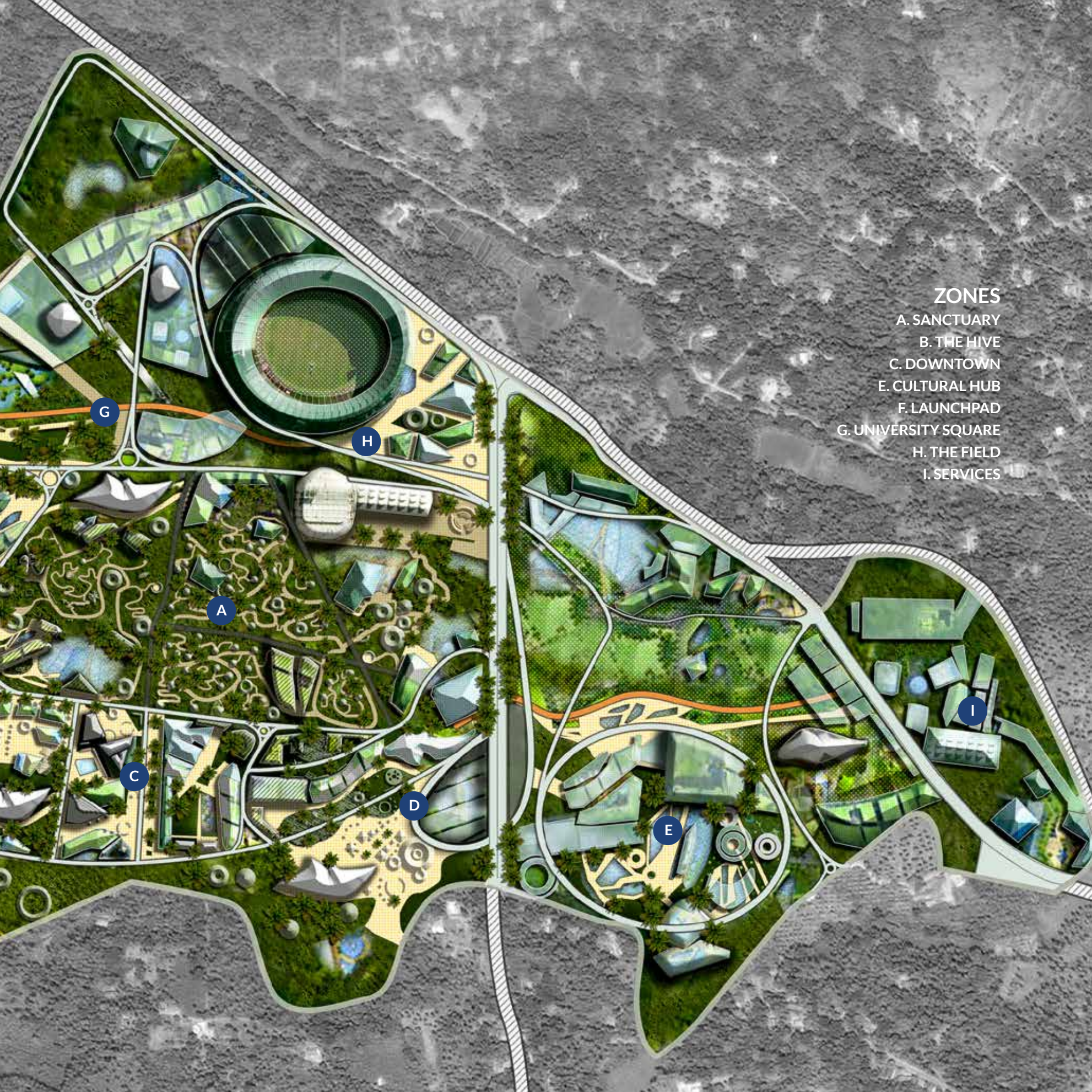
C. COMMERCIAL ZONE

Retail, F&B Space, Community
Hypermarket

D. RESIDENTIAL ZONE

Luxury Villas - 40 Villas
Apartments with Condominium Facilities - 437 Units





ZONES

- A. SANCTUARY
- B. THE HIVE
- C. DOWNTOWN
- E. CULTURAL HUB
- F. LAUNCHPAD
- G. UNIVERSITY SQUARE
- H. THE FIELD
- I. SERVICES



NUR CENTER

ILLUMINATING THE PATH TO WHOLENESS

Riyadh, Kingdom of Saudi Arabia

The Nur Center in Riyadh is a luxury inpatient and outpatient rehabilitation facility designed as a sanctuary of renewal and spiritual healing. Inspired by the meaning of Nur—"light"—the architecture emphasizes openness, calm, and inner clarity. Abundant natural light, serene landscapes, and contemplative courtyards create an atmosphere of peace and connection, while private suites and therapeutic spaces ensure comfort and dignity. Every detail is shaped to nurture holistic wellbeing, offering patients a restorative environment where recovery becomes both a personal and spiritual journey.





AVINYA ACADEMY

REDEFINING EDUCATION

Bandaragama, Sri Lanka

Avinya Academy redefines educational architecture, offering underprivileged children a second chance at learning in an inspiring, sustainable environment. Featuring open, elliptical learning pavilions inspired by lily pads, the design fosters creativity, reflection, and a deep connection with nature. Its innovative use of recycled materials, solar energy, and passive cooling techniques sets a new benchmark in sustainability. This groundbreaking project has earned multiple prestigious international design awards, celebrating its vision, impact, and architectural excellence. Avinya Academy stands as a testament to how thoughtful design can transform lives and communities.



CAPE DIAMANTE

Tangalle, Sri Lanka



WHERE OCEAN SERENITY MEETS LUXURIOUS LIVING

Tangalle Villas, inspired by ocean waves and surfboards, blend seamlessly with the hilly landscape to offer panoramic Indian Ocean views. Featuring infinity pools, expansive decks, and lush greenery at the rear, each villa balances coastal luxury with nature's tranquility.





KEEKROK LUXURY TENTS

IMMERSED IN THE WILD, ELEVATED BY DESIGN

Masai Mara Game Reserve, Kenya

Unparalleled Escape into the Wild

Designed to provide an intimate connection with nature, each tent is meticulously appointed, offering comfort and elegance while immersing guests in the untamed beauty of the African wilderness. With stunning views of the savannah and the iconic wildlife, the resort offers world-class amenities, including gourmet dining, rejuvenating spa treatments, and thrilling game drives. Whether you're witnessing the Great Migration or simply soaking in the serene landscape, this extraordinary retreat promises an unforgettable escape into Africa's wild heart.



The Masai Mara is home to one of the Seven Natural Wonders of the World: the Great Migration. Every year, over 1.5 million wildebeest, along with hundreds of thousands of zebras and gazelles, migrate across the Mara River in search of greener pastures, creating one of the most spectacular wildlife events on the planet, often referred to as "the greatest show on Earth."

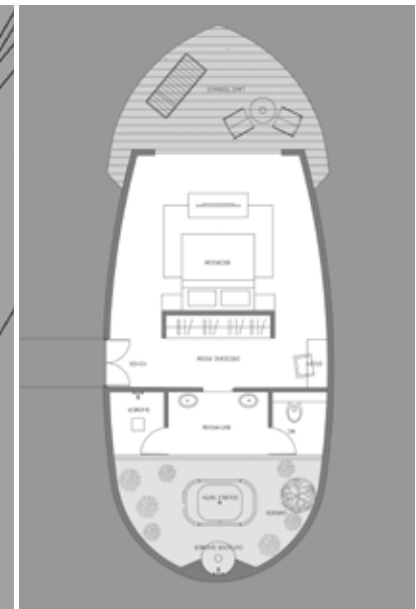
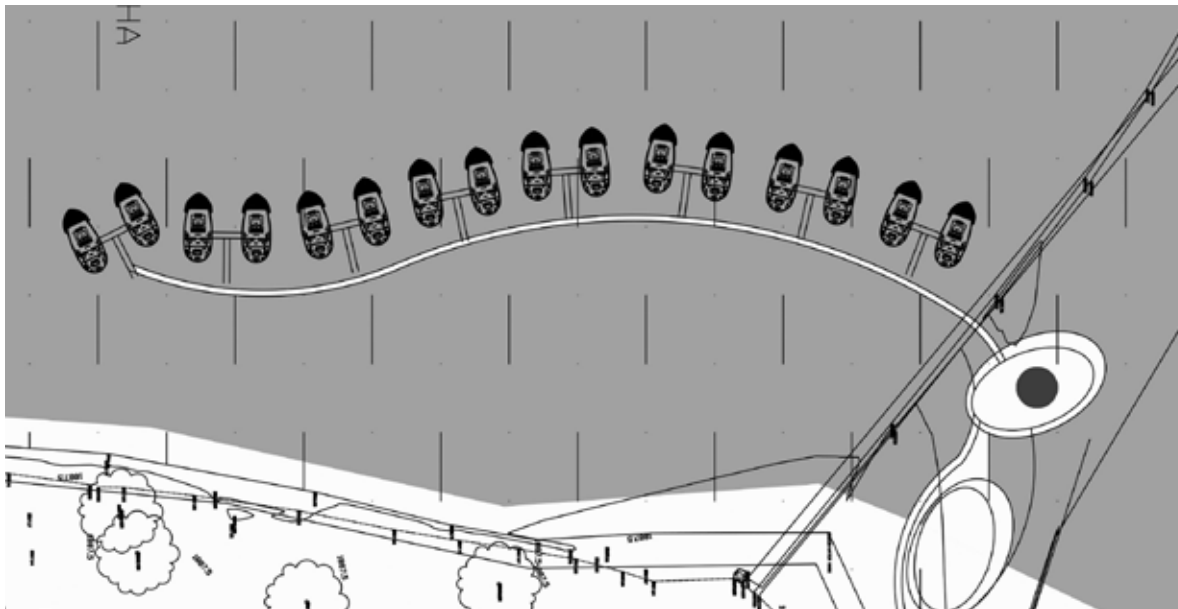


KIBOKO RESORT

FLOATING SANCTUARIES OF SERENITY

Lake Naivasha, Kenya

Set against the serene backdrop of Lake Naivasha, Kenya, the Premium Water Villas redefine lakeside luxury. Inspired by the elegant forms of boats gliding on the lake, these exclusive water villas extend into the water, featuring private decks, lush gardens, outdoor baths, and showers for an unparalleled connection with nature. Blending modern elegance with the lake's natural beauty, each villa offers breathtaking panoramic views and indulgent privacy. Guests are treated to world-class amenities, including rejuvenating spa treatments, exceptional dining experiences, and personalized services. Whether it's a romantic retreat or an adventurous escape, the Premium Water Villas promise tranquility, opulence, and unforgettable memories at one of Kenya's most exquisite destinations.



DF VILLA

URBAN OASIS

Colombo, Sri Lanka

The personal residence in Colombo is a serene oasis amidst the urban hustle, providing a sapce for reflection and events. Inspired by nature, its open and adaptable design blurs indoor-outdoor boundaries, with light serving as a vital element that animates the spaces. Featuring a modern veranda offering expansive views of lush greenery and sliding glass facades for cross ventilation, this home sets a new standard for environmental sustainability. Upstairs, private family areas boast a feature swimming pool and an onyx breakfast bar, adding luxurious comfort to the sanctuary.











SERENITY TOWER

Nawala, Sri Lanka

FLUID FORMS, TIMELESS TRANQUILITY

Serenity Tower is a symbol of premium luxury living, inspired by the flowing water of a riverbed. Its architecture celebrates the fluidity of water with gentle curves that rise gracefully, embodying the calming and rejuvenating properties of water, which has long been revered in many cultures for its healing qualities. DesignOne incorporates water features such as ponds and pools, using their serene blue tones and tranquil sounds to create a natural sense of calm and serenity within the tower's design.



TRILIGHT

WEAVING ELEGANCE INTO URBAN LIVING

Trilight's architecture responds to the unique topography of the Newton site, with levels seamlessly transitioning through a dynamic façade of planters, balconies, and bay windows. The two towers make an elegant statement, harmonizing with their surroundings while incorporating intricate details, such as a subtly patterned feature screen wall. The design maximizes panoramic views, blending form, function, and the natural environment for a refined, modern aesthetic.





From iconic tradition to modern elegance, the transformation of Kingsbury Hotel redefines luxury by blending heritage with contemporary sophistication.



KINGSBURY HOTEL

A TIMELESS TRANSFORMATION

The former InterContinental, was rebranded as Kingsbury Hotel by DesignOne, blending modern aesthetics with traditional elegance. The transformation preserves the hotel's heritage while offering a fresh, luxurious experience, making it a premier destination in Colombo.





AVANI HOTELS

REINVENTING HOSPITALITY

DesignOne's innovative approach brought a fresh spirit to Hemas Holdings' Avani Hotels. Through thoughtful reconfiguration of spaces and guest experiences, we breathed new life into the brand, creating a vibrant, modern identity that resonates with today's





Project Location

Multiple locations along Southern Coast, Sri Lanka

Transforming Spaces with Innovation

DesignOne's ingenuity has redefined the Hemas Hotels brand, infusing it with a fresh, modern spirit. Through precision updates to key areas, including the innovative Duchamp-inspired 'Room in a Valise' concept, they introduced adaptable plug-in walls, transforming traditional spaces into versatile, cutting-edge environments tailored to the evolving needs of guests.

DESIGNONE OFFICE

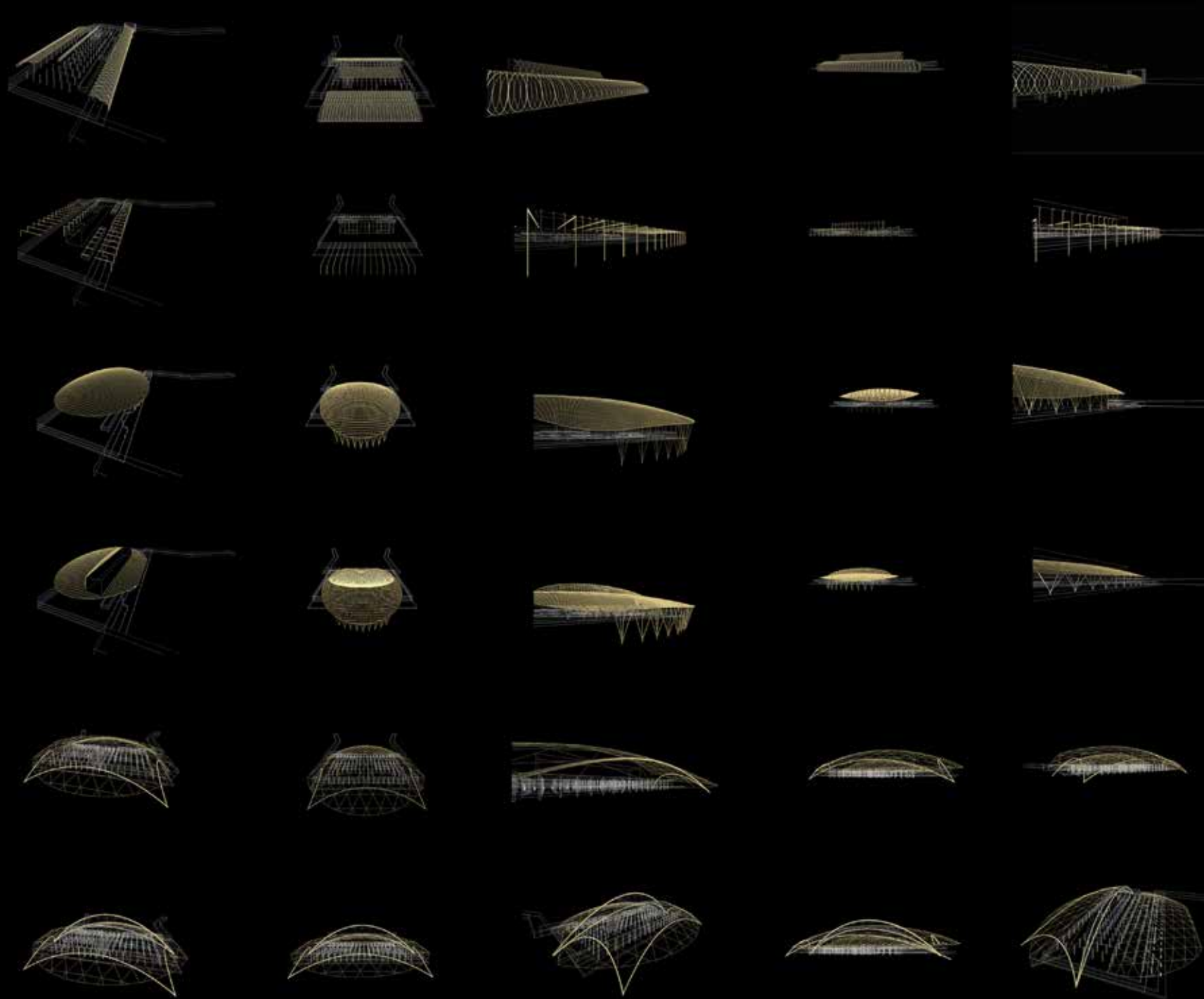
327/11, Nawala Road, Nawala, Sri Lanka



WHERE LIGHT, SPACE, AND VISION SHAPE INNOVAITON

The centerpiece of DesignOne Studio is its awe-inspiring double-height workspace, a grand expanse that exudes openness and creativity. Bathed in natural light streaming from all sides and a skylight above, this remarkable space fosters collaboration, inspires innovation, and sets the tone for the studio's visionary designs.





Changi T1 Sketches

*To God,
be all glory,
honor, and praise.*

CONTACT INFO

Colombo

327/11 Nawala Rd,
Nawala, Sri Lanka
T. +94 773 208 555

Venice

Contra San Marco, 35
36100 Vicenza, Italy
T. +39 327 1798 393

Dubai

Sikander Museum
Al Rais Center,
Mankool Road,
Dubai, U.A.E.
T. +971 4355 3200

Riyadh

8124, Street 229,
Al Narjis, Riyadh13324
Saudi Arabia
T. +971 522 740 525

E. INFO@DESIGNONE.LK